



Digital life made easy

Join-In for Grid 3

Getting Started



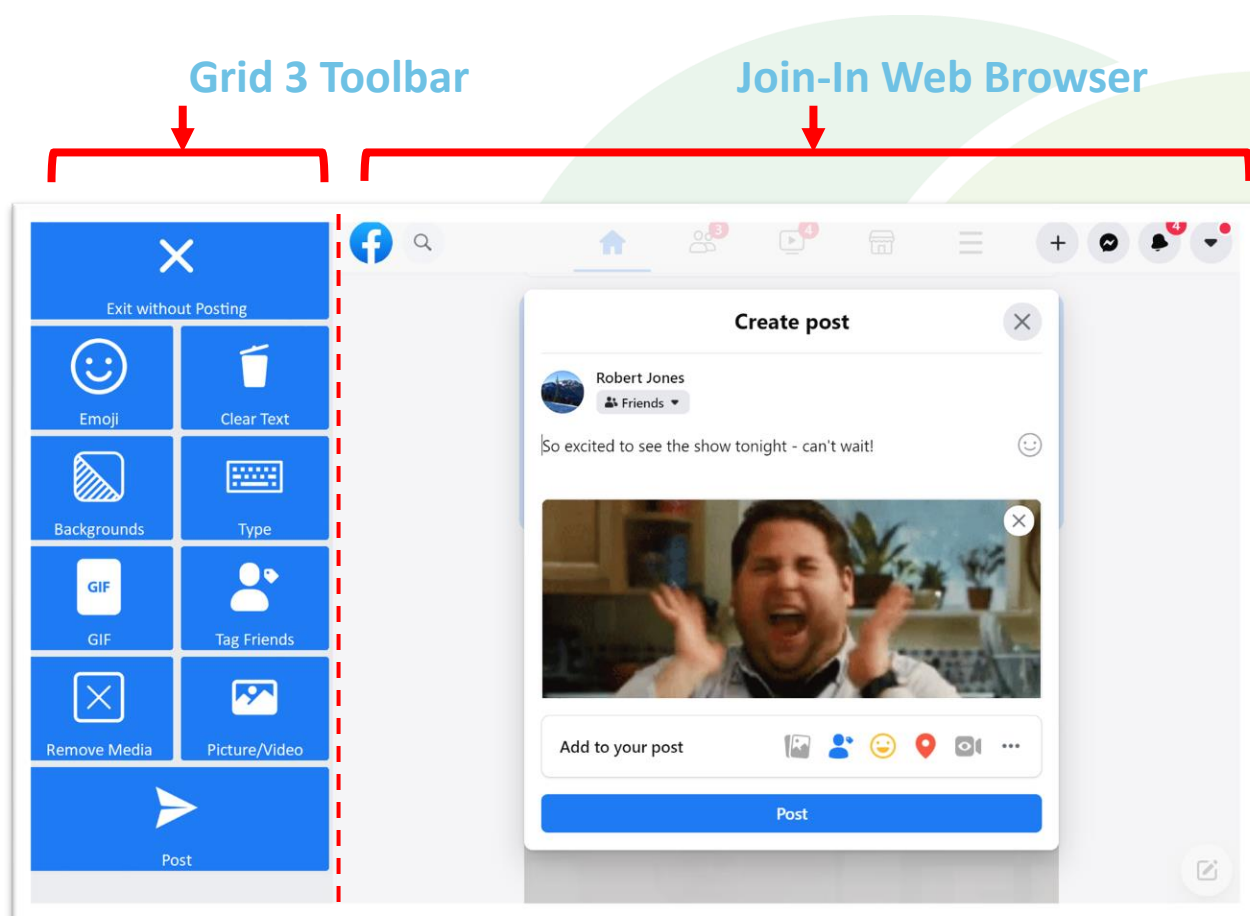
Engage. Experience. Enjoy

What is Join-In?

Join-In is a growing collection of AAC-optimized versions of popular apps and sites. Grid 3 users can use Join-In accessible apps to participate fully in digital life.

How does Join-In Work?

Join-In applications look and feel like one program is running on your device, but actually they are made up of two separate components working together.



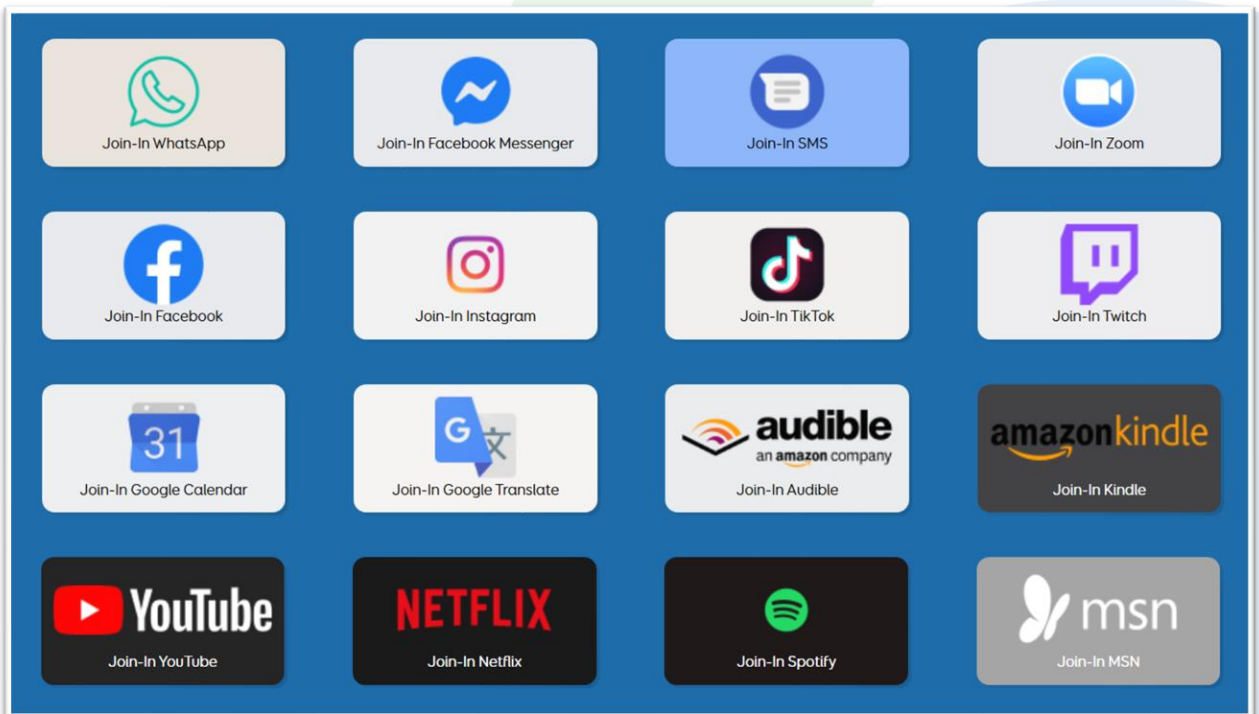
The **Grid 3 Toolbar** docked at the side of the screen is used to control what happens in the **Join-In Web Browser**. Join-In users click accessible buttons in the toolbar using their regular input device (eye tracking, touch, switches, etc.), and the corresponding actions are then performed the browser as if they had been input using a standard keyboard and mouse.

Digital Life Made Easy

We hope you enjoy using Join-In to participate in digital life. Resources and support are available at apps.d-bur.com – you can contact us there.

Join-In Accessible Applications

- ✓ Social Networks and Messengers
- ✓ Streaming Apps
- ✓ Productivity and Independence
- ✓ News and Content

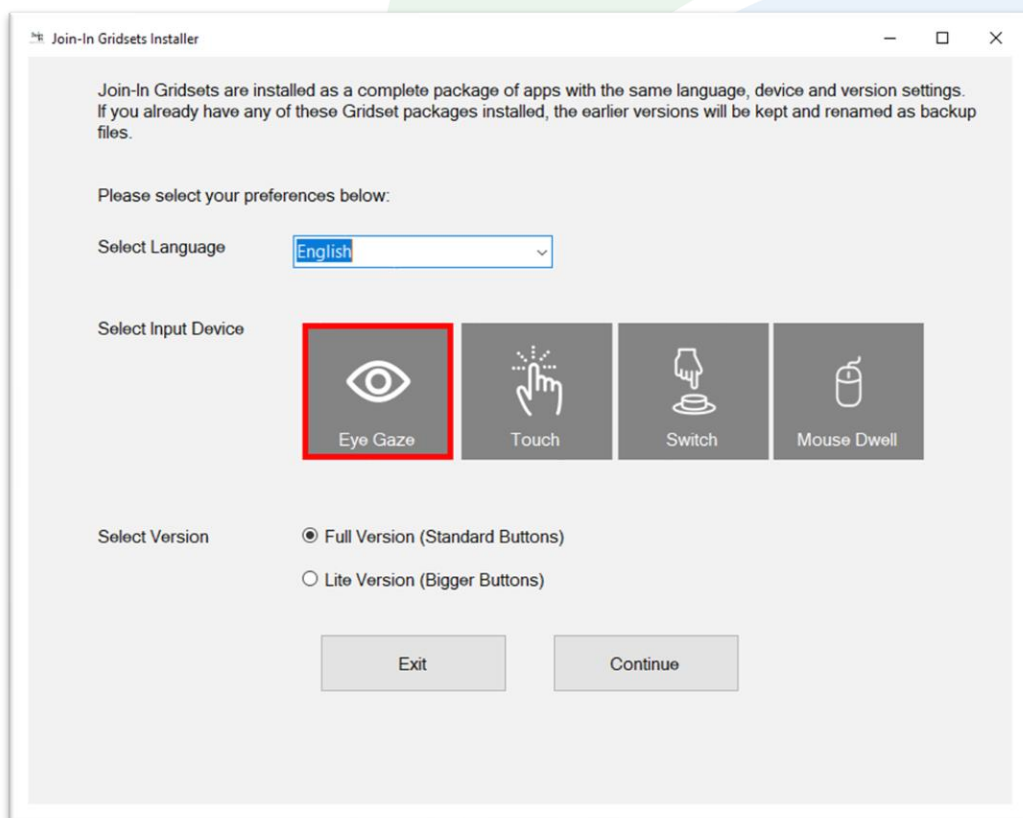


Before You Start

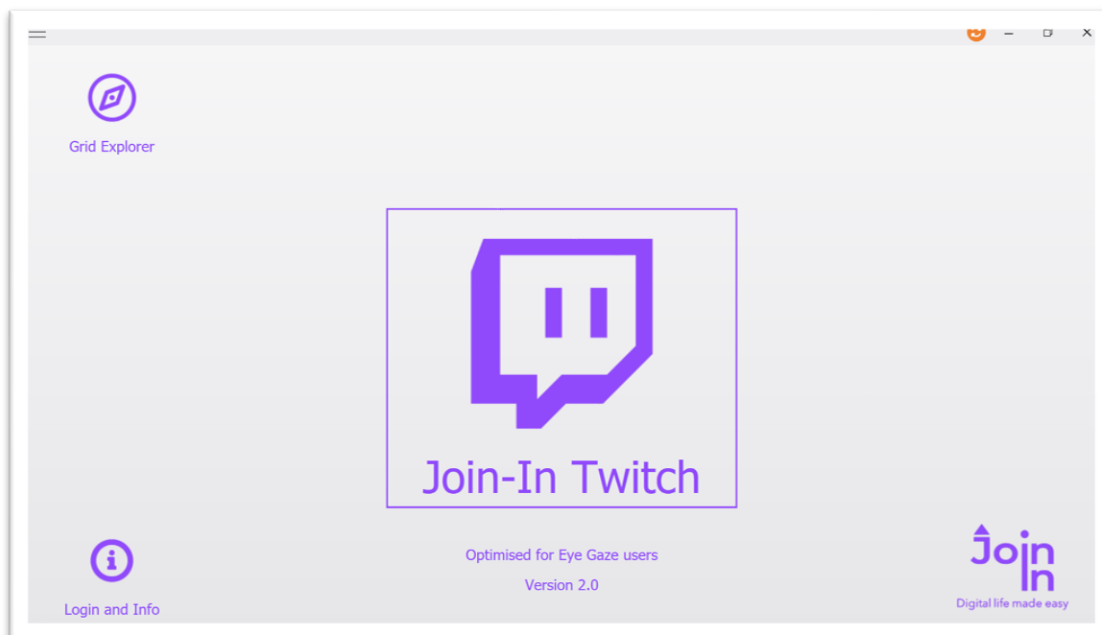
- Make sure you have an Internet connection.
- Make sure you have a valid [Join-In Subscription](#), license key or free trial period.

Installation Instructions

- Download and install the [Join-In Browser](#)
- After installing the browser, the **Join-In Gridsets Installer** will automatically run and help you to install a package of Join-In Gridsets.
- Select your **Language**, **Device** and **Version** preferences for your Gridset package installation, and follow the prompts provided by the installer. You can manually re-run the **Join-In Gridsets Installer** again at any time to get a different package.

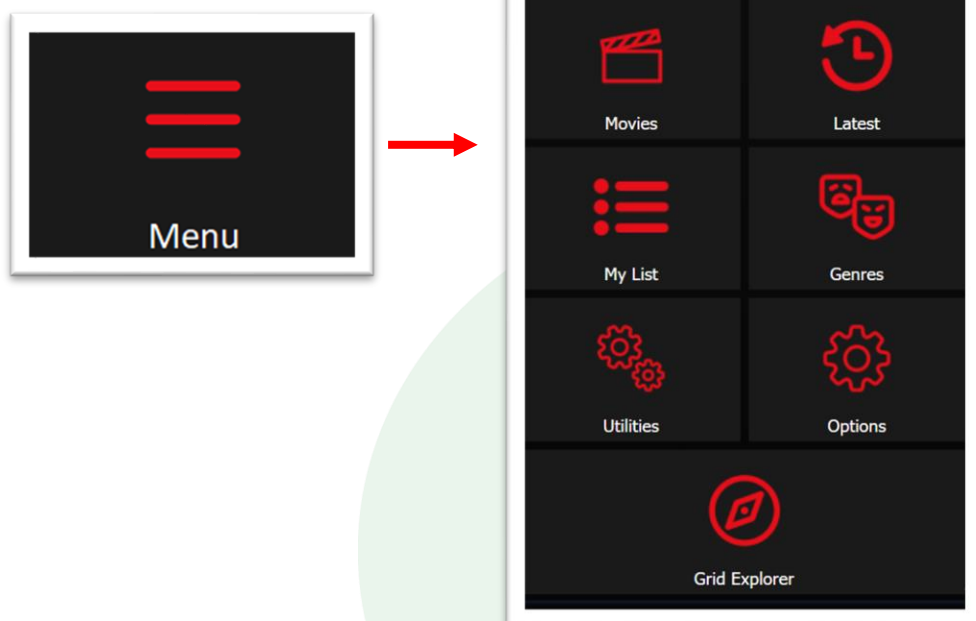


- Open the **Join-In Login** Gridset to activate your subscription or free trial, or run the **Join-In License Manager** to use a license key instead if you have one.
- You can now use all of the Join-In Gridsets. Logging in or activating a license key is only required the first time you use Join-In on your device.



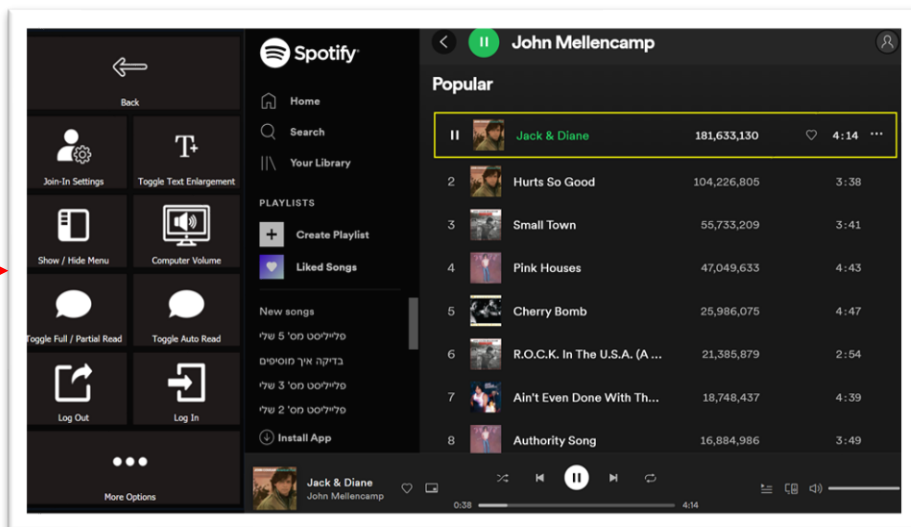
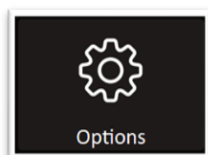
Start Page

- All Join-In applications are opened from the Grid 3 Grid Explorer, which takes you to a start page that looks like this. The big button with the logo inside it launches the Join-In browser for the app you are using.
- **Info** or **Login and Info** - click this the first time you use each app to login if needed, or view the **Training Cards** page for the app.
- Some apps require you to be logged with an account in order to be able to use the site at all. The **Getting Started** page of the **Training Cards** for each app should be consulted for information about using each app for the first time.
- Some apps may also require a QR code to be scanned or some other verification procedure only on the first time you use the app. Thereafter, you will remain logged in. Complex login procedures should only be required once.
- **Grid Explorer** – takes you back to the Grid 3 Grid Explorer without launching the app.



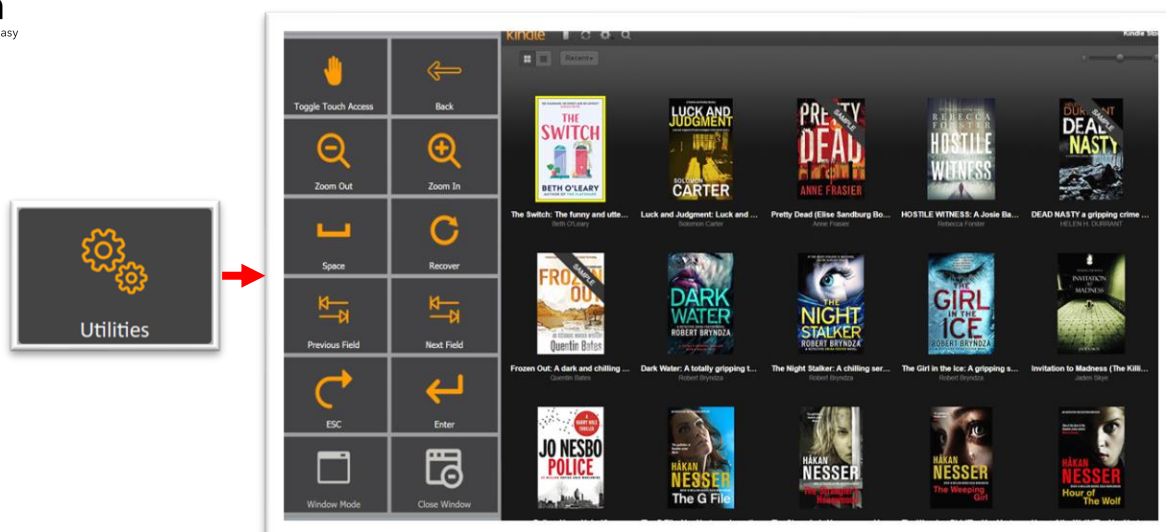
Menu Page

- When you first open any app, you will arrive at the app's 'home' page. This might be a social media feed, a list of messaging chats, a view of media items, etc. In all cases, what you see is unique to the app.
- The **Training Cards** resources provide information regarding the home page and specific features of each app, but there are many elements common to all Join-In applications – most of which are accessible via the **Menu**.
- All apps have a **Menu** button on the home page (and many other pages) that takes you to the main menu. This page contains core functionality and allows you to navigate to different parts of the site you are using.
- The menu page always has buttons that lead you to the **Options** page, the **Utilities** page, and a **Grid Explorer** button for exiting the app. More information about each of these buttons is provided on the following pages.



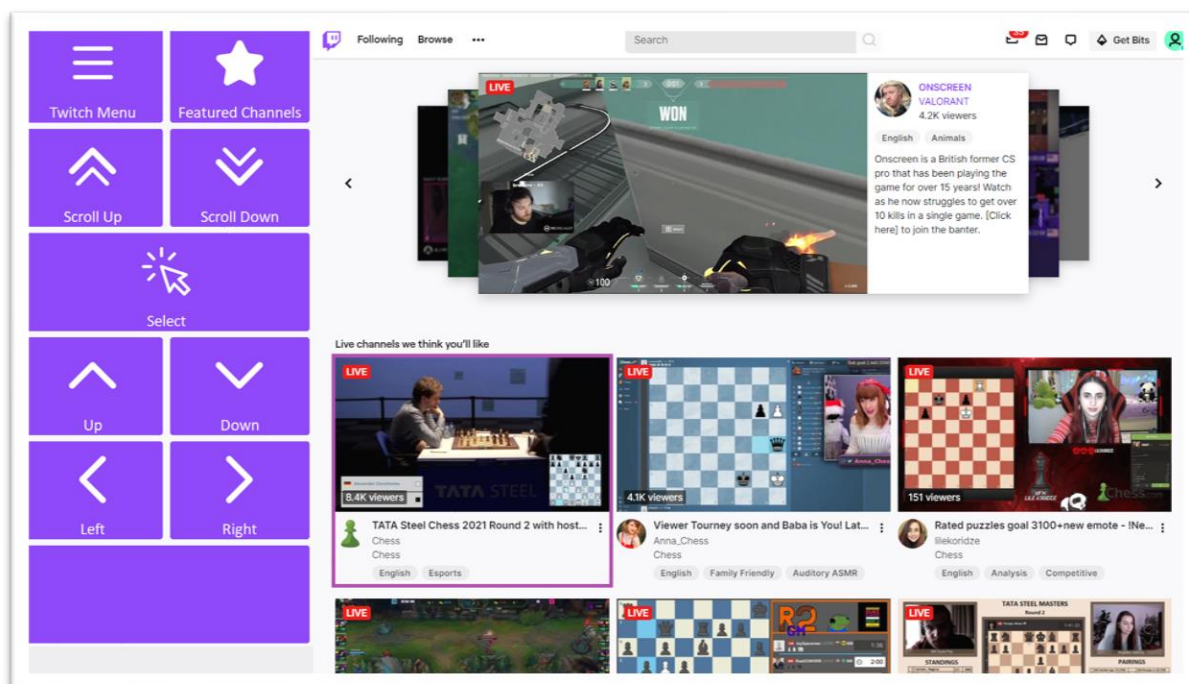
Options Page

- The **Options** page in each application contains the main actions you can take to change how the site you are using looks and behaves. The available features depend on the app you are using, and the settings you apply are only saved for that app rather than across all Join-In applications. The list below only covers the buttons that are most commonly found on **Options** pages.
- **Toggle Auto Read** – useful text can automatically be read aloud as you navigate through different parts of the site. For example – messenger contact names, social media posts, film/song titles, etc. will be read aloud when enabled.
- **Log In / Log Out** – allows you to sign in or out of the account you are using for this site. If you used the Login and Info button to sign in the first time you used the site you will usually remain logged in, but if you are signed out for some reason or you want to switch accounts, you can do that via the options page.
- **Toggle Text Enlargement** – important text in different parts of the site can be shown in a larger font size to make it more readable. The factor by which the font size is enlarged can be changed in **Additional Options**.
- **Device Volume** – when you use sites with audio or video players, the main volume controls adjust the settings of the media player only. Try adjusting your computer / device volume settings as well to find the right level.
- **Join-In Settings** – launch the [Join-In Settings](#) app to make adjustments to the way the Join-In browser works for your input device.
- **Additional Options** – takes you to a page with a selection of additional options you can change for the site. The most common example is **Change Font Size**, which allows you to set how big the text appears when **Text Enlargement** is on.



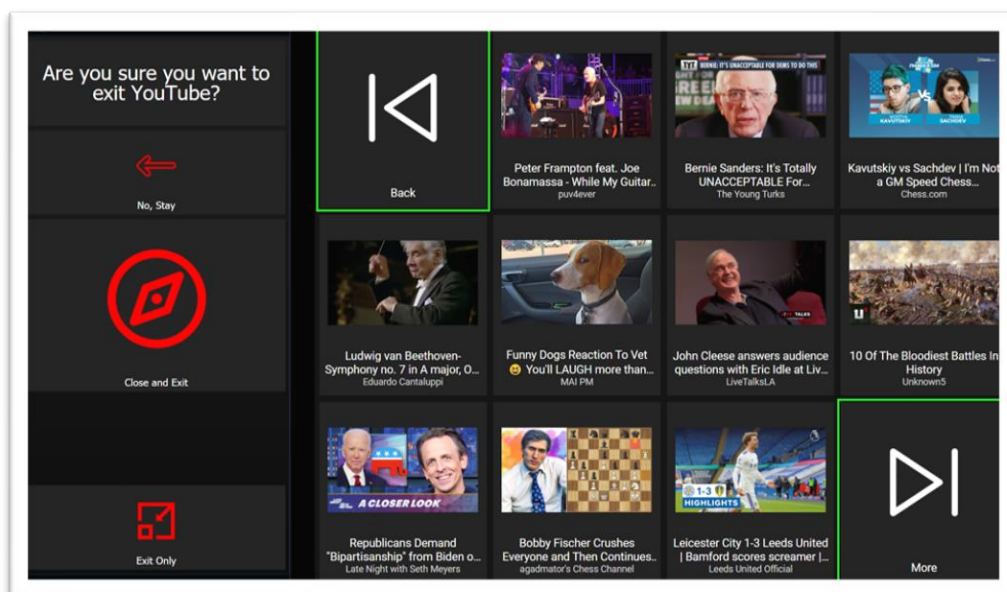
Utilities Page

- The **Utilities** page appears in all Join-In apps. It is accessible by clicking the **Utilities** button on the **Menu** page of all apps (or inside the **Options** page of Lite apps). This page provides tools to manage unexpected or challenging situations which may arise, and it is a very important “troubleshooting” resource.
- **Recover** – Use this button when, for some reason, you “lose” the window of the active app. If none of the buttons in the toolbar are doing anything to the browser window, you should use this button. Clicking it will bring the app window back to focus or open it in a new window if it was closed by mistake.
- **Toggle Touch Access** – In some situations, it may be useful to temporarily toggle this touch input access while you are using an app, for example – to be able to clear an unwanted popup or use a link not provided in the toolbar. This button is not available in Gridsets that are optimized for Touch users.
- **Zoom In** and **Zoom Out** – these buttons change the zoom factor of the browser window. The initial zoom is 100%. Once you changed it, your zoom factor will be saved and used by the active app until changed again.
- **Space, Esc, Enter** – simulates pressing space, escape or enter on a keyboard. These buttons may be useful in a variety of situations, such as trying to close a popup window (esc), confirming text input (enter), or play/pause in many media players (space).
- **Previous Field** and **Next Field** – these buttons allow you to navigate the links on the browser page. These buttons are useful mainly when an unwanted message box pops up. Join-In tries to filter out automatically all annoying messages, however, if such message is not closed automatically, you can click the **Previous Field** and **Next Field** buttons to navigate to the button on the message that closes it, and then click **Enter**.
- **Window Mode** – click this button if you want the app to exit Full Screen mode, so that you can get access to the device desktop.
- **Close Window** – click this button to close the active browser window. This is useful when too many windows opened while using Join-In.



Explorer Pages

- Some applications (like Instagram, Twitch, TikTok, YouTube) are made up of many 'explorer' pages that look a bit like the one shown in this picture. An explorer page consists of many rows of selectable media items which can be opened. The buttons you see on these pages depend on what part of the site you are visiting and the input device that your Gridset is optimized for.
- **Top Row** – always contains a link to the **Menu**, and it will sometimes contain another button to take you to other areas in the same part of the site. There might be just a menu button.
- **Middle Rows** – will contain all the buttons you need to be able to choose an item from the browser. The buttons you see depend on the input device that your Gridset is optimized for (Switch, Eye Gaze, Touch or Mouse Dwell). Consult the [Join-In Settings](#) training cards for more guidance on how Join-In Gridsets work with different input devices.
- **Bottom Row** – this row contains additional features or options if any are available. Examples include; sorting and filtering media items, following an account or hashtag, etc.



Exiting Apps

- All apps have an exit page that looks like this. There are two buttons that can be used to go to the Grid 3 Grid Explorer – **Close and Exit** and **Exit Only**.
- **Close and Exit** – use this button if you want to stop using the app, close the browser window and go to Grid 3 Grid Explorer.
- **Exit Only** – use this button to go to Grid 3 Grid Explorer and only minimize the browser window. This keeps the app open in the background, which may be useful in some situations, for example;
 - Keep Spotify, Audible or YouTube audio open in the background so you can continue listening while you do something else.
 - Keep WhatsApp, Facebook Messenger or SMS open in the background so you will hear if you receive message notifications.
 - Keep any app open in the background if you need to exit momentarily to do something else.
- If you have many Join-In applications open and you want a quick way to close them all without re-entering them one by one, you can use the **Join-In Close All** utility to exit all Join-In applications at once.

