

## Using Join-In Pro with Communicator 5

Tobii-Dynavox Communicator 5 users can access Join-In Pro apps directly from their displays, and toggle between their page set and Join-In Pro apps. Users can:

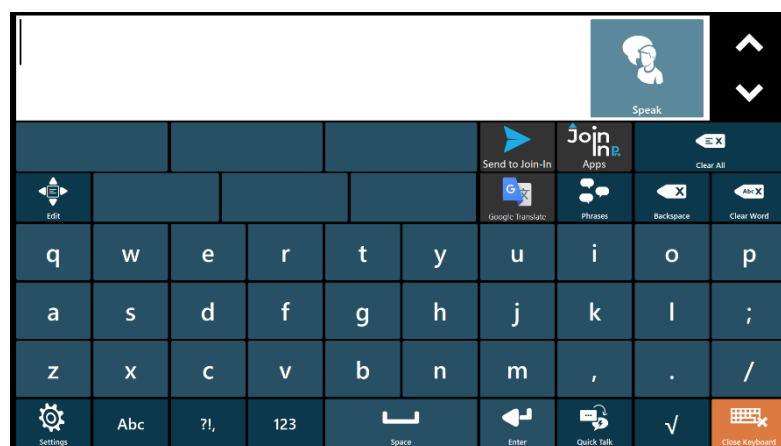
- Send messages, posts and comments they composed using their Communicator 5 keyboard to the various Join-In Pro apps (e.g., Facebook, Instagram, Whatsapp, Gmail, and more).
- Use Communicator 5 to search the various apps (e.g., search contacts in Whatsapp, videos in Youtube, etc.).
- Translate text composed in Communicator 5 by using the Join-In Pro Google Translate.

## Integrating Join-In Pro in Communicator 5

Start by downloading the page set - [C5 Qwerty10 Join-In Pro Integration](#). This page set is based on the Communicator 5 Qwerty10 keyboard, with additional buttons that allow the user to open any Join-In Pro app directly from Communicator 5 and use the Qwerty10 keyboard to type in Join-In Pro.

It can be used as is, or by copying the relevant buttons to user's preferred Communicator 5 keyboard.

You can download this page set from the Join-In website (<https://apps.d-bur.com/downloads-support/>) or from TD Pageset Central.

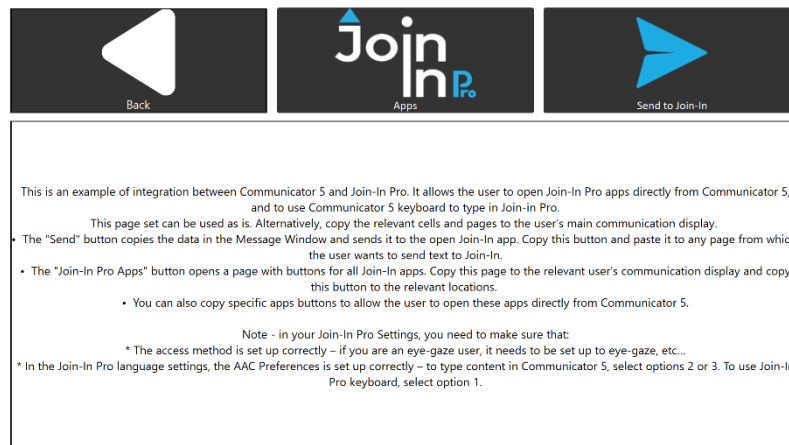


Pic 1: The Qwerty 10 keyboard, with three Join-In Pro related buttons – (1) **Send to Join-In** – sends text to the Join-In open app, (2) **Google Translate** – sends text for translation, and (3) **Join-In Pro Apps** – opens the Join-In Pro apps page.





Pic 2: The Join-In Pro Apps page – each button opens the relevant Join-In Pro app.



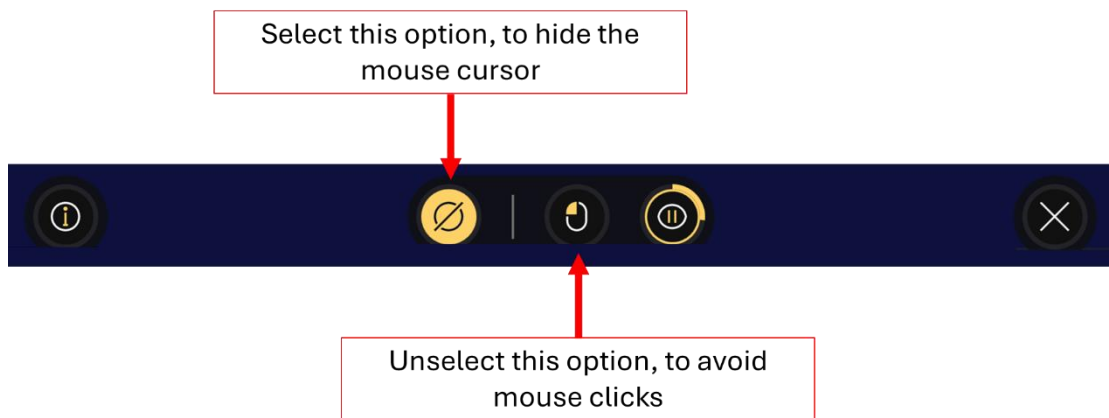
Pic 3: The Info Page

**Before starting to work with Join-In Pro and Communicator 5, you need to configure Join-In Pro Settings. This is a onetime activity that can be done right after installing Join-In Pro:**

- Open Join-In Pro go to **Settings, Accessibility** and select the appropriate **Input Device**.
- Go to **Settings, Keyboard, AAC Preferences**, and select your preferred option:
  1. Open apps directly from Communicator 5, type using the Join-In keyboard.
  2. Use Communicator 5 to compose messages, posts, comments and search phrases.
  3. Use Communicator 5 for all input, including usernames and passwords.



When you run Join-In Pro for the first time, make sure that TD Control is in the correct mode. To do that, look below the screen to bring the TD Control ruler up and select buttons as shown in the picture below:



Pic 4: Selecting the “Hide” button, unselecting the “Click” button

**A typical flow – using Join-In Pro with TD Snap to compose a message:**

- (1) Open one of the Join-In Pro messengers from your Communicator 5 page set.
- (2) In the messenger, select a contact, and click “Type Message”.
- (3) After being transferred to your Communicator 5 page set, compose your message, using your keyboard.
- (4) Click **Send to Join-In**. This will take you back to the messenger. Review the message and send it.

To download Join-In Pro, go to <https://apps.d-bur.com/downloads-support/>

**Questions? Comments?**

**Feel free to contact us at [info@d-bur.com](mailto:info@d-bur.com).**

