

Join In

Digital life made easy

Join-In for Grid 3

Google Translate

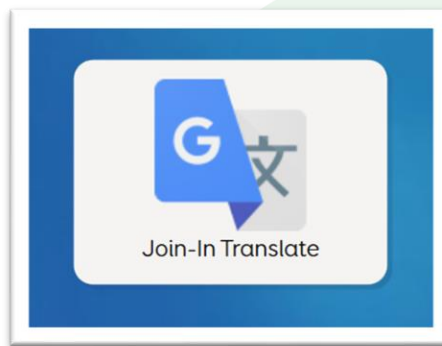


Using Join-In Google Translate

- There are two different ways to use Join-In Translate:

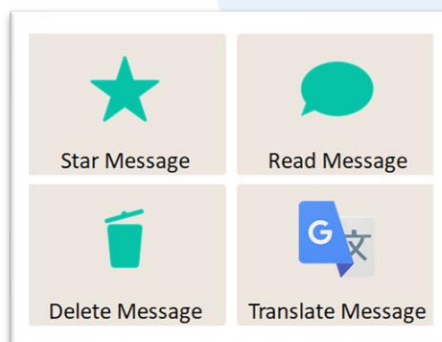
1) As a Standalone Application

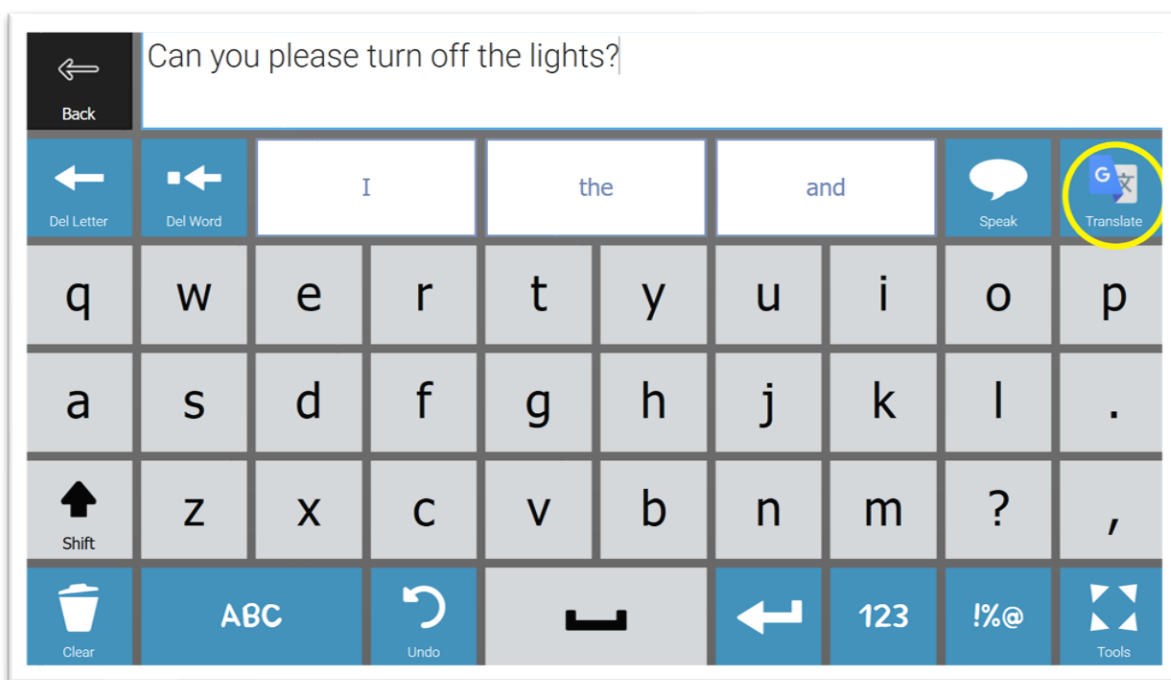
- Open **Join-In Google Translate** on you Grid 3 Grid Explorer.
- See [Page 3](#) and the rest of this document for details.



2) As a Tool Inside Other Applications

- Click the button when you see **Google Translate** icon inside another application.
- Available in **Facebook Messenger, WhatsApp, Android Messages** and **TikTok**.
- Appears in both **Read** and **Write** contexts for sending and receiving messages.
- See [Pages 4-5](#) only for details.



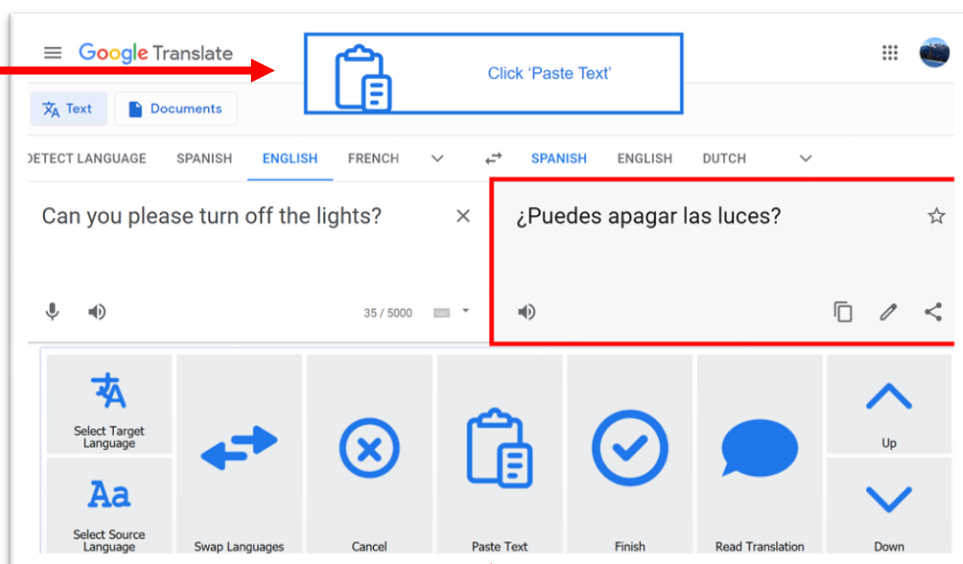


About Join-In Translate

- Join-In Google Translate is a standalone application for situations where translating text is the only thing that you need to do - for example, in a face-to-face conversation with someone who speaks a different language. The main part of the app works in the same way as using Join-In Google Translate from within any other Join-In application. Only the start and end points are different.

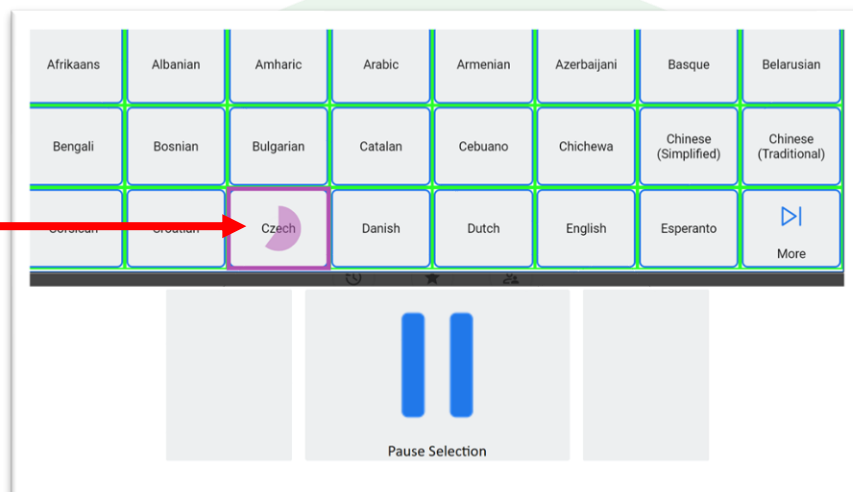
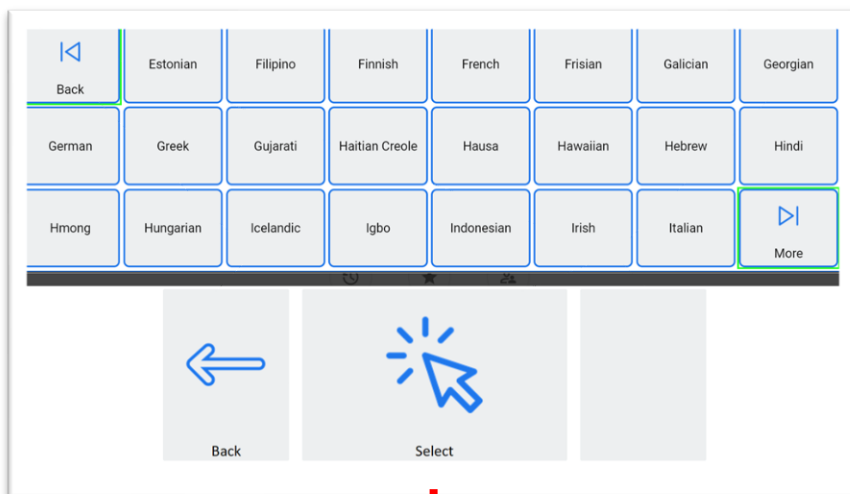
Getting Started

- Open Join-In Google Translate from your Grid 3 Grid Explorer page.
- Type the message you want to translate on the keyboard.
- **Translate** – the circled button above will copy the text in the message window onto the clipboard then open the Google Translate site.
- **Back** – go to the Join-In Google Translate start page. You can exit to Grid Explorer from here.



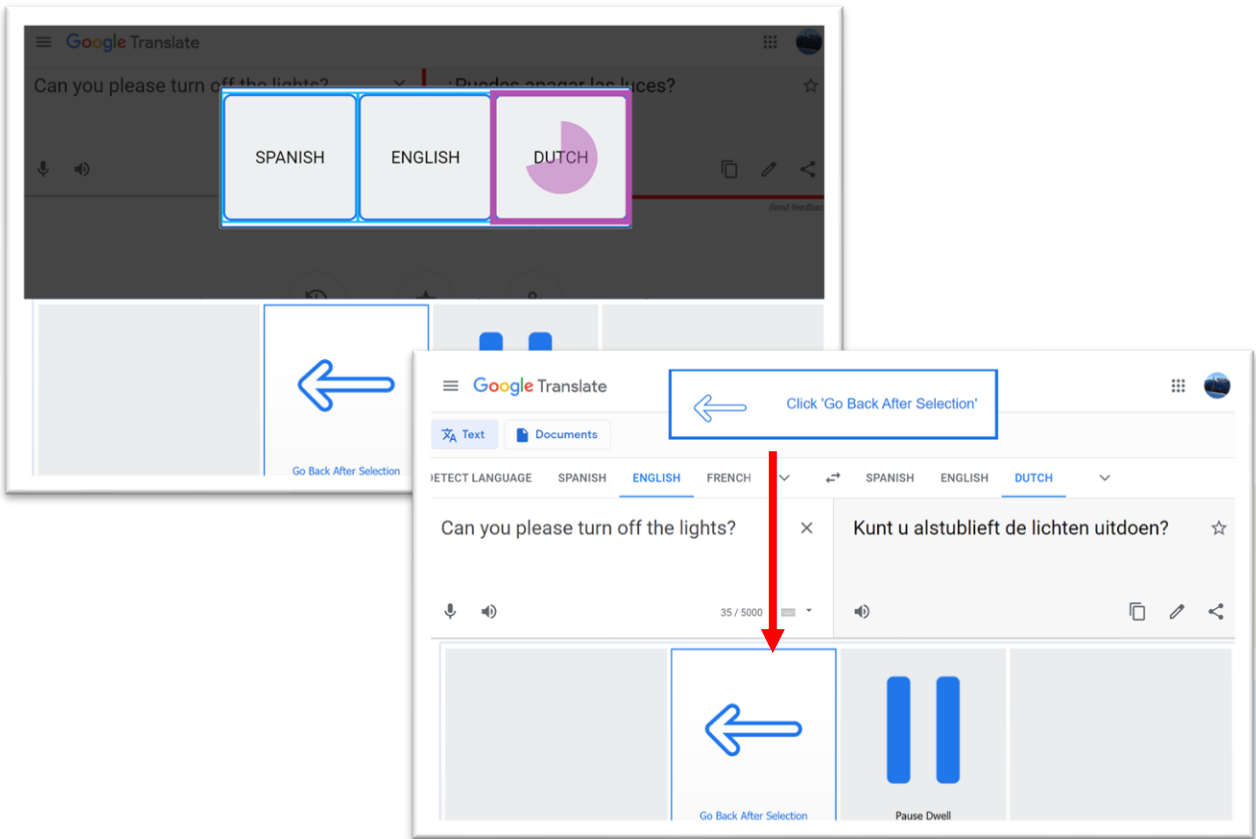
Google Translate Main Page

- **Paste Text** – When the Google Translate site loads you will see a popup message at the top of the screen prompting you to click Paste Text. This pastes the text you selected for translation into the source language input field.
- **Select Source Language** – select the language of the text you wrote. The default is auto-detected language.
- **Select Target Language** – select the language you want the text translated into.
- **Swap Languages** – swap the source and target languages.
- **Read Translation** – read the translation aloud. Reading aloud is done by Google Translate (not by Grid 3) and will work only for languages where Google Translate supports reading aloud.
- **Up / Down** – in cases where Google Translate offers more than one translation, use the arrows to browse the different options.
- **Finish** – (shown when translating in **Read** mode) – return to the application you were using. If you are in Write mode, the translated text will be copied to the keyboard page you return to, where you can read it aloud or send it as a message - depending on which app you are using.
- **Cancel** – return to application without saving the translation.



Select Language

- When you first click **Select Source Language** or **Select Target Language**, you will see only the three most recently used languages appear as options to choose from. If you want another language click **See All** to see the full list as shown in the image above.
- The buttons you see on this page and the way that you select an option from the table depends on which control method (**Eye Gaze**, **Switch**, **Touch**, **Mouse Dwell**) the Gridset you are using is optimized for. Please refer to the [Join-In for Grid 3 Getting Started](#) guide for information on how to download the Gridsets that are best for you.
- **Back / More** – these buttons in the table take you to the previous / next page of available languages.
- **Back** – the back button in the Gridset closes the table and takes you back to the main page.



Redirect Messages

- If you are using the **Eye Gaze**, **Touch** or **Mouse Dwell** optimized versions of Join-In Translate, you will see a popup **Redirect Message** appear at the top of the page after completing a selection.
- When you see this message, click the **Redirect Button (Go Back After Selection)** to go back to the main controls.